

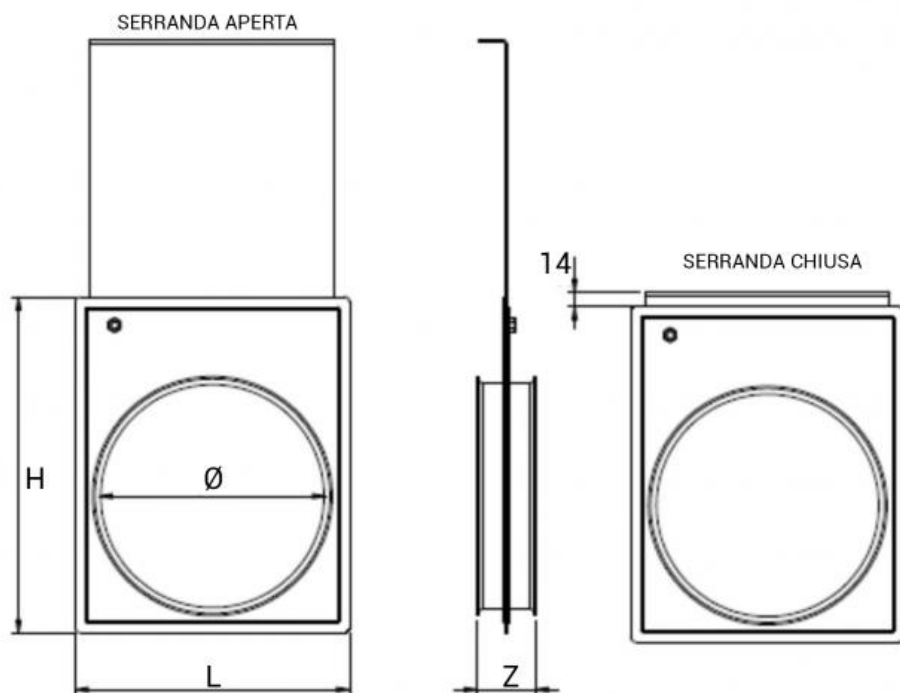
SG serrande di regolazione a ghigliottina manuale a bordo cravatta

Description

Serrande di regolazione a ghigliottina in acciaio zincato adatte per l'utilizzo in impianti di aspirazione.

On demand

-Available on order in stainless steel dampers.
-Pneumatic shutters.
-Electro-pneumatic shutters.
-Damper atex.

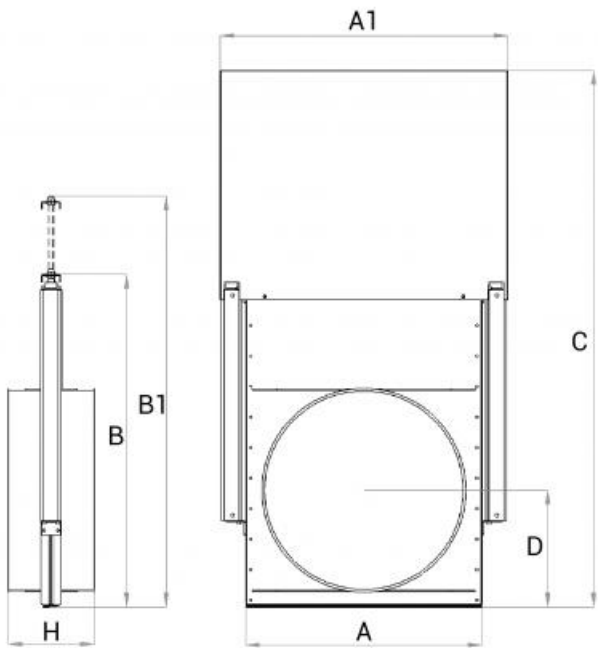


Dimensions and price list

Dimensions are expressed in mm.

| Item normally available from stock | | | | |
|------------------------------------|-----|-----|----|---------------------|
| modello Ø | L | H | Z | serrande manuali SG |
| mm | mm | mm | mm | euro |
| 80 | 120 | 150 | 40 | ✓ |
| 100 | 145 | 190 | 50 | ✓ |
| 120 | 165 | 210 | 50 | ✓ |
| 140 | 180 | 220 | 50 | ✓ |
| 150 | 190 | 237 | 50 | ✓ |
| 160 | 205 | 245 | 50 | ✓ |
| 180 | 220 | 280 | 50 | ✓ |
| 200 | 240 | 310 | 50 | ✓ |
| 220 | 260 | 330 | 65 | ✓ |
| 240 | 280 | 340 | 55 | ✓ |
| 250 | 290 | 362 | 65 | ✓ |
| 260 | 300 | 370 | 75 | ✓ |
| 280 | 320 | 390 | 65 | ✓ |
| 300 | 345 | 410 | 80 | ✓ |

Dimensioni e Listino prezzi serie pesante



Dimensions are expressed in mm.

| modello Ø | A | A1 | B | B1 | H | C | D | kg | serrande manuali SG |
|-----------|-----|------|------|------|-----|------|-----|----|---------------------|
| mm | mm | mm | mm | mm | mm | mm | mm | | euro |
| 350 | 470 | 600 | 790 | 1130 | 285 | 1160 | 240 | 30 | ✓ |
| 400 | 520 | 650 | 790 | 1180 | 285 | 1256 | 265 | 35 | ✓ |
| 450 | 570 | 700 | 890 | 1330 | 285 | 1406 | 290 | 40 | ✓ |
| 500 | 620 | 750 | 890 | 1380 | 285 | 1456 | 315 | 48 | ✓ |
| 550 | 670 | 814 | 990 | 1530 | 285 | 1606 | 340 | 58 | ✓ |
| 600 | 720 | 864 | 990 | 1580 | 285 | 1656 | 365 | 69 | ✓ |
| 650 | 776 | 914 | 1090 | 1730 | 285 | 1806 | 390 | 76 | ✓ |
| 700 | 826 | 964 | 1090 | 1780 | 285 | 1856 | 415 | 80 | ✓ |
| 750 | 876 | 1044 | 1190 | 1930 | 285 | 2006 | 440 | 86 | ✓ |
| 800 | 926 | 1094 | 1190 | 1980 | 285 | 2056 | 465 | 91 | ✓ |