

EVHRP SMALL High efficiency heat recovery unit for flow rates up to 320 m³/h



Description

Ventilation unit complete with heat recovery unit dedicated to air exchange without energy waste. The unit is particularly suitable for individual family units, flats and in all cases where the nominal air exchange rates do not exceed 320 m³/h. Constant flow rate selectable in 3 levels.

Characteristics

- Sheet metal self-supporting frame.
- Galvanised sheet metal panels, painted on the outside, with high density EPS internal insulation; Alucobond Composite front panel
- High efficiency counter-current cross-flow polypropylene heat exchanger. Low freezing temperatures. Very high heat exchange efficiency.
- Brushless fans with electronic motor and constant flow control; very high efficiency and low noise levels.
- ePM1 70/80% filters with low pressure drop for both supply and exhaust, easily removable.

Control electronics for version S

The unit is supplied without electronic board and the fan speed is changed by means of a 0-10V input signal.

It is possible to purchase the EVTVD remote terminal with LCD display separately, to control the speed of the fans and the bypass with various advanced functions, including:

- control of the speed of the individual fans independently, which means that the machine can be used in positive pressure or negative pressure mode;
- timed dirty filter warning;
- possibility of connecting the EVSQA air quality sensor, sold separately.

Control electronics for version IN2

Electronic board for 3-step speed management, antifreeze function and automatic bypass. Wall-mounted remote touch panel on 503 box. On-board temperature sensors and possibility of managing auxiliary hot water coil. Humidity / air quality regulators built into the remote display.

EVCNV2-N: advanced remote control with built-in humidity and VOC/CO₂ sensors, black.

EVCNV2-B: advanced remote control with built-in humidity and VOC/CO₂ sensors, white.

EVCNW2-N: advanced remote control with built-in humidity and VOC/CO₂ sensors and built-in Wi-Fi, black.

EVCNW2-B: advanced remote control with built-in humidity and VOC/CO₂ sensors and built-in Wi-Fi, white.

Electronic configuration IN2

A or B configurations selectable by electronics.

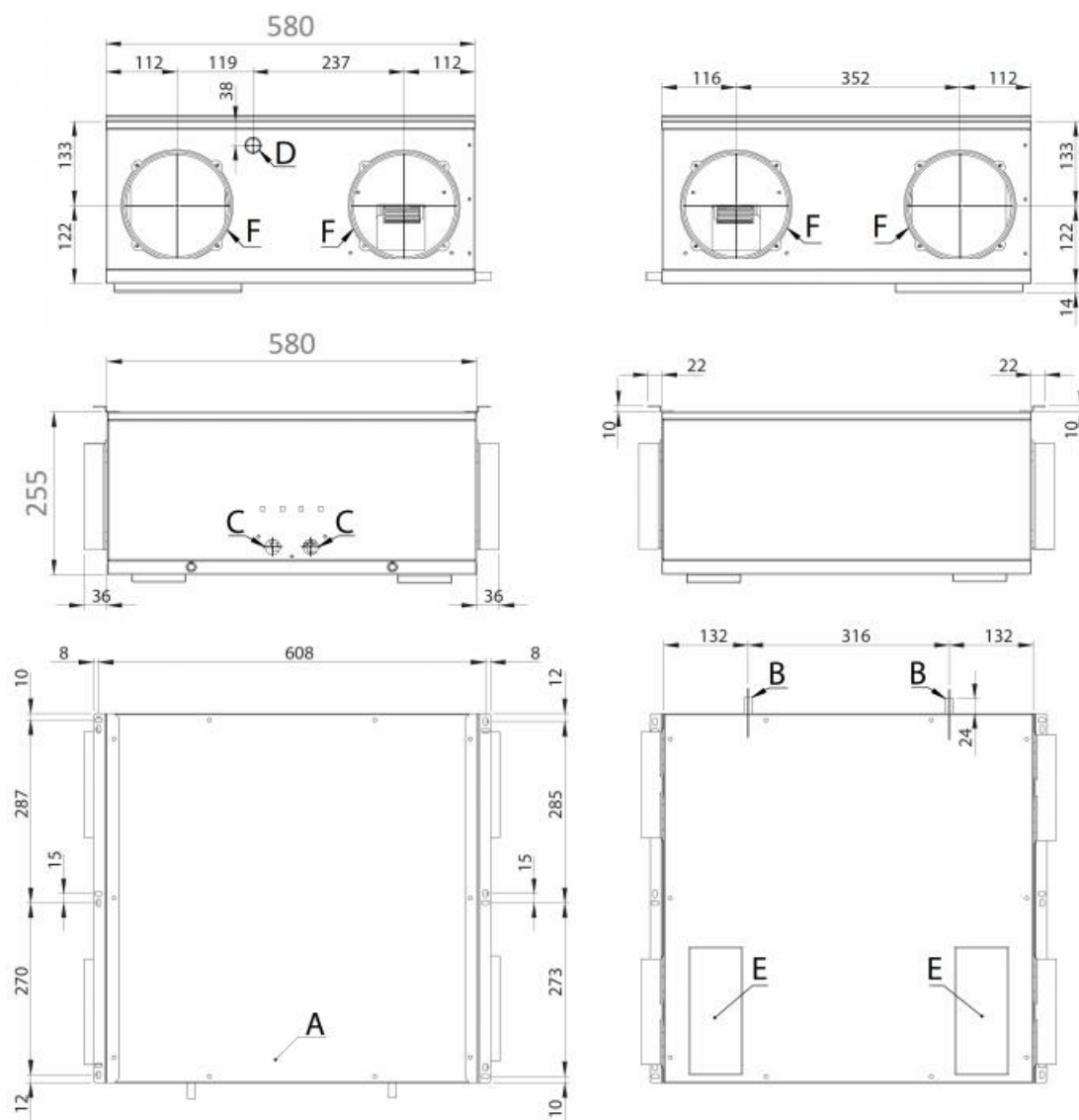
Use

Houses and surgeries for air exchange with up to 90% reduction in energy waste.

Technical specifications

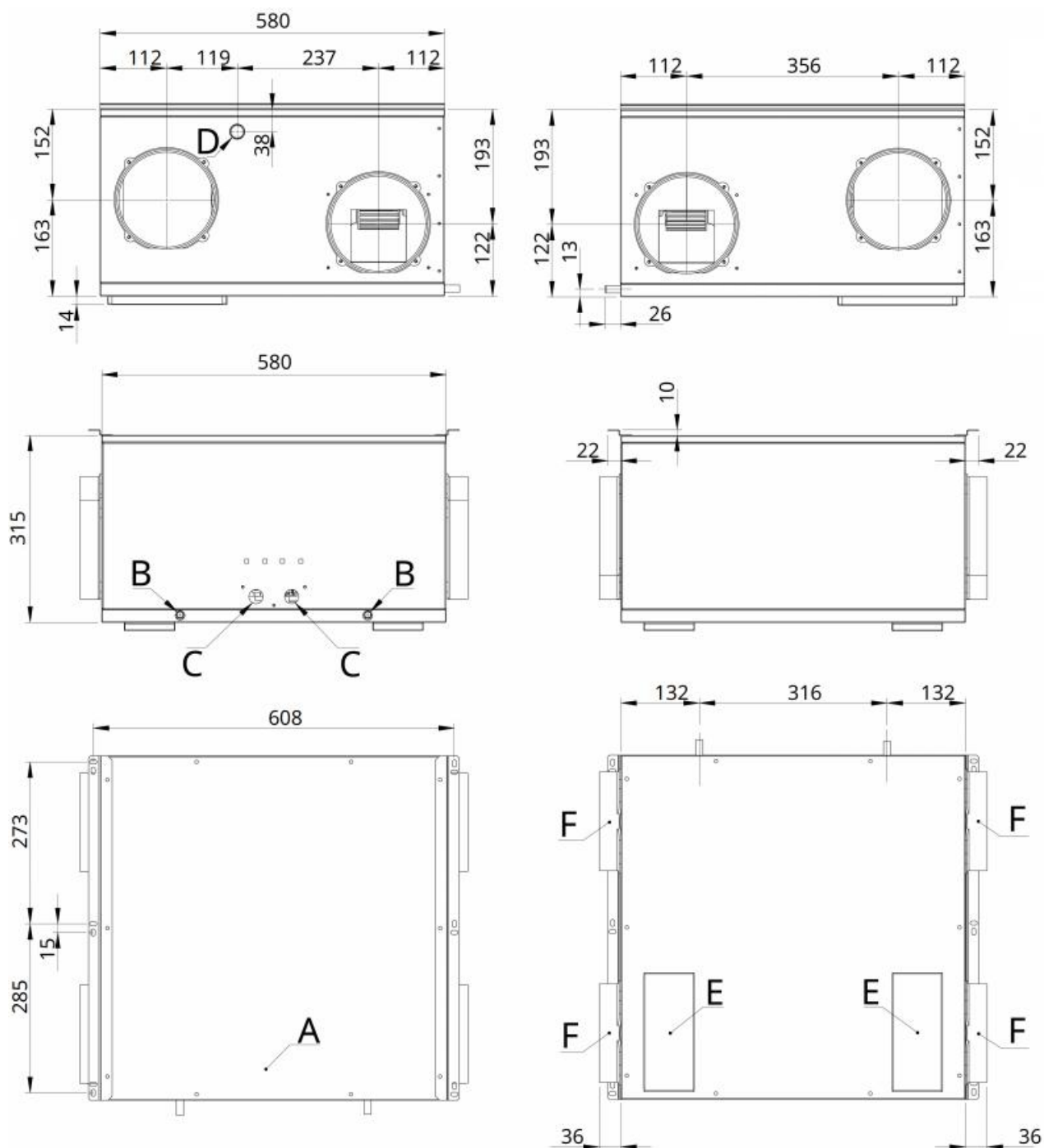
| EVHRP SMALL size | | 10 H/V | 15 H/V | 25 H/V |
|---|-------------|---|--------|--------|
| Type of Fans | | Forward-curved centrifugal - Brushless direct-coupled electronic motor | | |
| Number of Fans | Nr. | 2 | | |
| Air flow rate | m³/h | 130 | 210 | 320 |
| Useful pressure | Pa | 100 | 100 | 100 |
| Heat exchanger (Data referring to the UNI EN 13141-7 Standard Indoor temp. 20° - Indoor humidity 28% - Outside temp. 7° - Outside humidity 72%) | | Counter-current plates - polypropylene | | |
| Type of heat exchanger | | | | |
| Number of Heat exchangers | Nr. | 1 | | |
| Heat recovery efficiency | % | 87,0 | 85 | 85 |
| | | Filters | | |
| Type of filters | | Flat filters | | |
| Filtration class | | ePM1 80% | | |
| | | Acoustic data (Data referring to the UNI EN 3741 and UNI EN 3744 Standards) | | |
| Sound power Lw transmitted by the structure | dB(A) | 48 | 51 | 52 |
| Sound power Lw radiated from the duct | dB(A) | 55 | 57 | 60 |
| Average sound pressure Lp at 1 m | dB(A) | 41 | 43 | 45 |
| Average sound pressure Lp at 3 m | dB(A) | 34 | 36 | 38 |
| | | Electrical Data | | |
| Power supply | V / ph / Hz | 230 / 1 / 50 | | |
| Current consumption | A | 1,2 | 1,2 | 2,2 |
| Power consumption | W | 80 | 140 | 180 |
| Protection rating | IP | X2 | X2 | X2 |
| | | Dimensional data | | |
| Width | mm | 580 | 580 | 580 |
| Depth | mm | 580 | 580 | 580 |
| Height | mm | 255 | 255 | 315 |
| Connection diameter | mm | 160 | 160 | 160 |
| Condensate drain | mm | 12 | 12 | 12 |
| Weight | kg | 19 | 19 | 23 |
| | | classification of the various models according to the European regulation 1253/2014 and 1254/2014 | | |
| With remote control EVCNV2 - EVCNW2 (UR/VOC-Co2) | | A | A | A |

EVHRP SMALL 10-15 dimensions



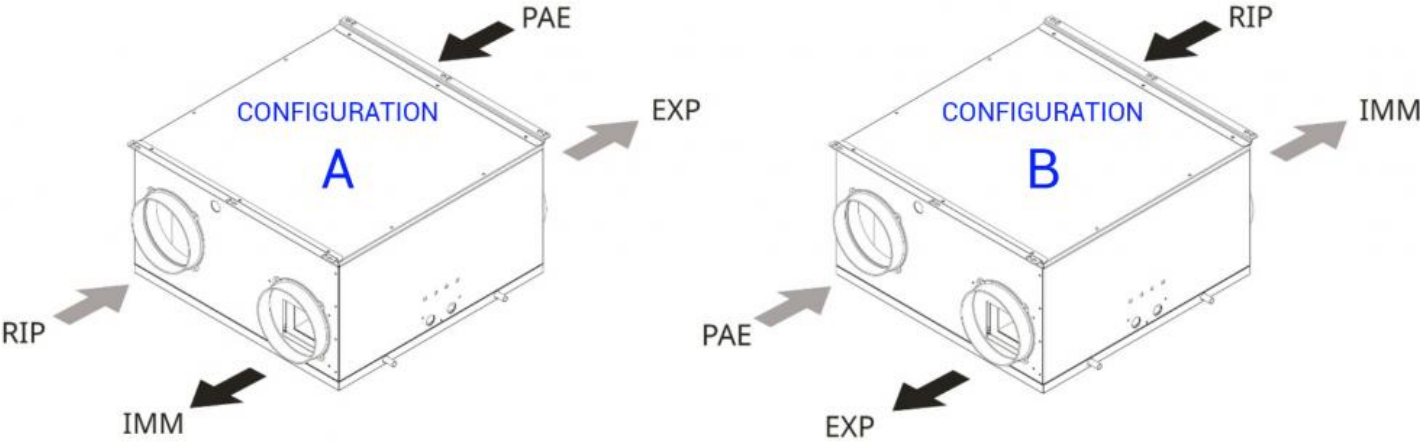
| Reference | Description |
|-----------|--|
| A | electrical cabinet |
| B | Condensate drain horizontal installation |
| C | Passage of power supply and display cables |
| D | Condensate drain vertical installation |
| E | Filter doors |
| F | Circular connections Ø 160mm |

EVHRP SMALL 25 dimensions

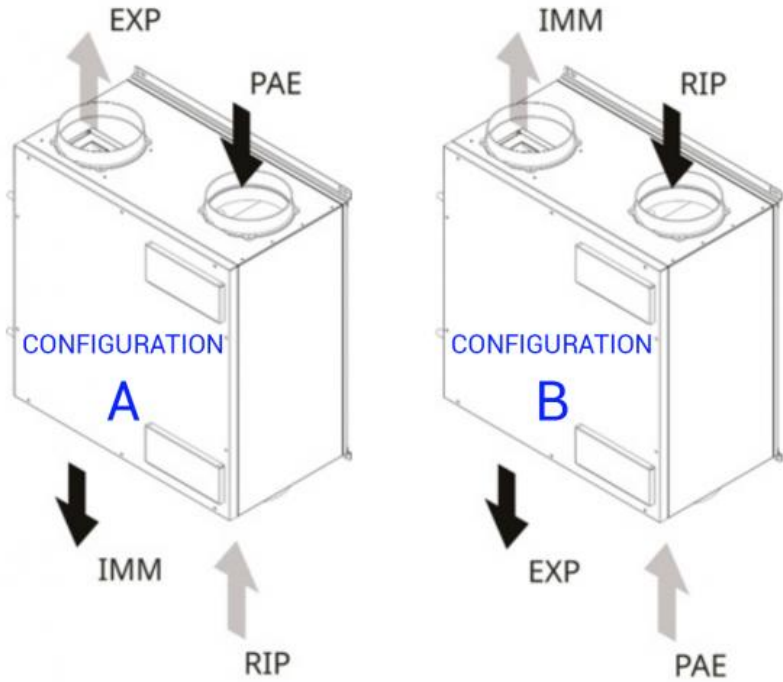


| Reference | Description |
|-----------|--|
| A | electrical cabinet |
| B | Condensate drain horizontal installation |
| C | Passage of power supply and display cables |
| D | Condensate drain vertical installation |
| E | Filter doors |
| F | Circular connections Ø 160mm |

HORIZONTAL INSTALLATION

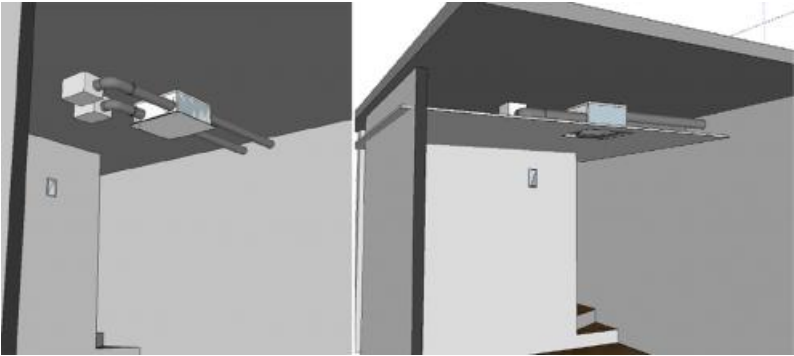


VERTICAL INSTALLATION



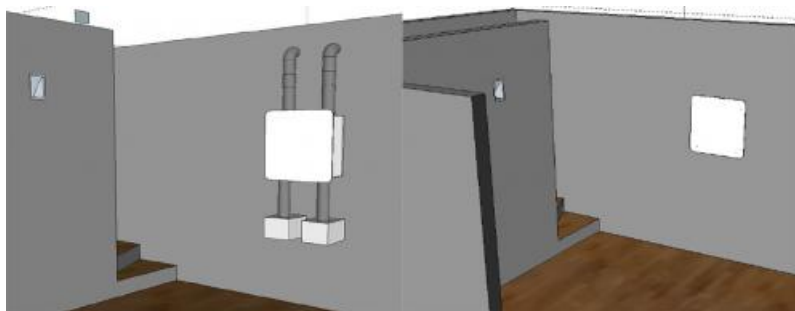
| Reference | Description |
|-----------|---------------------|
| PAE | External air intake |
| EXP | Expulsion |
| IMM | Ambient air intake |
| RIP | Room air intake |

HORIZONTAL installation



VERTICAL installation

In the case of vertical installation, it is possible to purchase the AESTHETIC COVER in composite panel in aluminum painted RAL9003.



RECESSED VERTICAL installation (only EVHRP SMALL 10-15):

The EVHRP SMALL units can also be installed recessed with the aid of a special formwork with 30 mm EPS insulation on all walls and 20 mm Foam insulation on the front closing panel, studied and designed in detail.

Two distribution boxes are housed in the formwork which allow the connection of up to 6 corrugated delivery pipes and 6 corrugated return pipes. The connection is made by means of sleeves with shutter suitable for the connection of the HTPE PLUS corrugated pipe with an internal diameter of 63 mm and an external 75 mm (on request a 76 mm internal and 90 mm external diameter). The sleeves for connecting the pipe are already included in the delivery of the formwork. It is also possible to purchase the EXTERNAL INTAKE KIT necessary to create the external air intake and exhaust air expulsion directly above the formwork without the aid of further ducts.

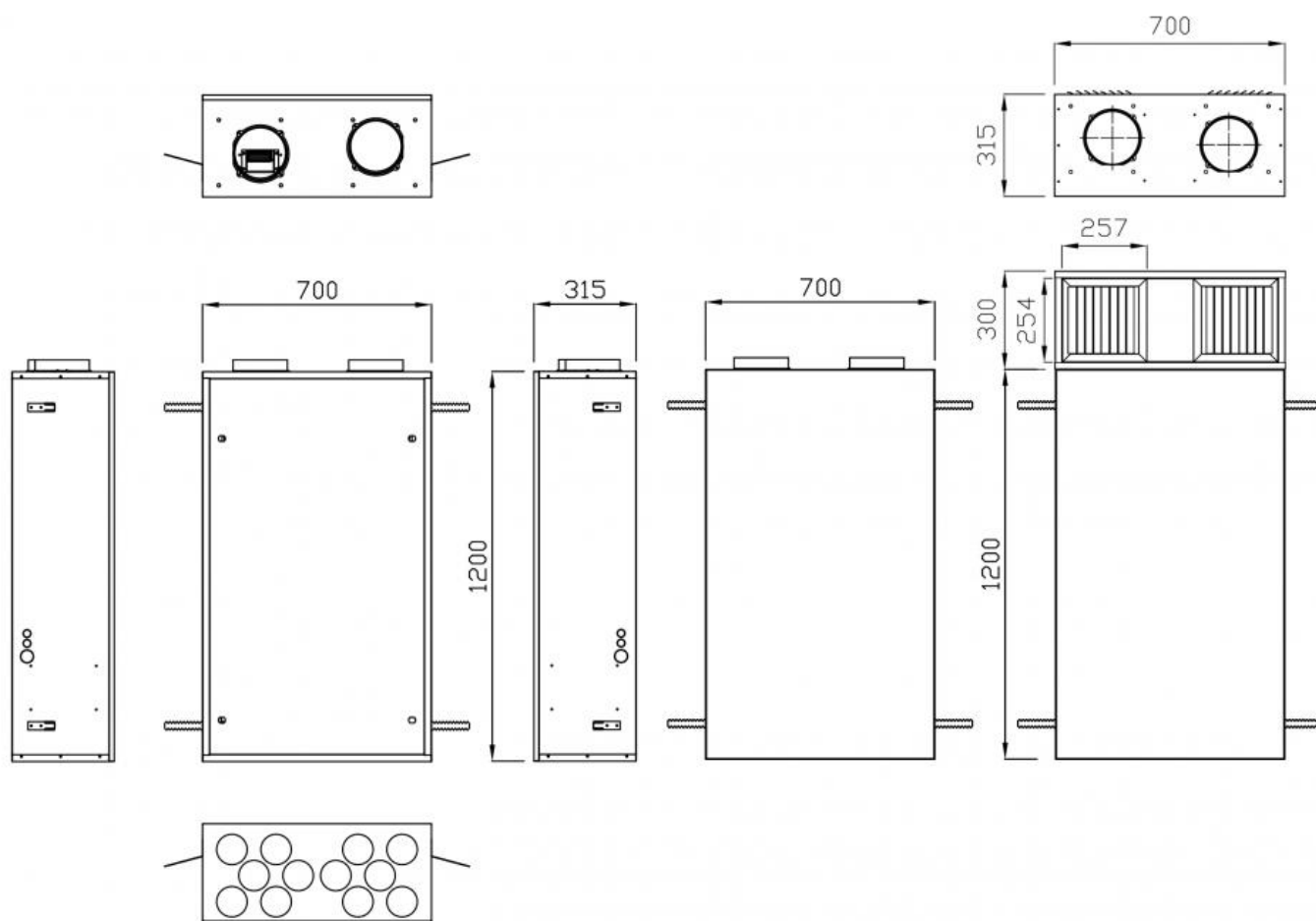




| FORMWORK VERSION UI EVHRP SMALL CONFIGURATION A EXTERNAL AIR KIT | FORMWORK VERSION US EVHRP SMALL CONFIGURATION B EXTERNAL AIR KIT |
|---|---|
| <p>EXPULSION EXTERNAL AIR INTAKE</p> <p>SUPPLY AIR AIR INTAKE</p> | <p>SUPPLY AIR AIR INTAKE</p> <p>EXPULSION EXTERNAL AIR INTAKE</p> |

Formwork dimensions

All dimensions are expressed in mm.



S VERSION price list:

| Item normally available from stock | | | | | |
|------------------------------------|-------------------------------|---------------------------------|--|--------------------------|---------------------|
| model | EVHRP SMALL (configuration A) | remote electronic control EVTDV | Electric box for recessed installation for EVTDV | air quality sensor EVSQV | pair of filters kit |
| | euro | euro | euro | euro | euro |
| 10 | 1768,25 ✓ | | | | 71,14 ✓ |
| 15 | 2036,57 ✓ | 188,78 ✓ | 17,78 ✓ | 262,66 ✓ | 71,14 ✓ |
| 25 | 2455,16 ✓ | | | | 82,57 ✓ |



IN2 VERSION price list:

| Item normally available from stock | | | | | |
|------------------------------------|--|--|--|--|--|
|------------------------------------|--|--|--|--|--|

| model | EVHRP SMALL (configuration A) | remote electronic control EVCNV2-N. Black color | remote electronic control EVCNV2 -B. White color | EVCNW2-N remote electronic control with Wi-Fi connection. Black color | EVCNW2-B remote electronic control with Wi-Fi connection. White color | pair of filters kit |
|-------|----------------------------------|--|---|--|--|------------------------|
| | euro | euro | euro | euro | euro | euro |
| 10 | 2015,11 ✓ | | | | | 71,14 ✓ |
| 15 | 2318,31 ✓ | 230,88 ✓ | 230,88 ✓ | 285,05 ✓ | 285,05 ✓ | 71,14 ✓ |
| 25 | 2710,07 ✓ | | | | | 82,57 ✓ |



Price list FORMWORK AND ACCESSORIES (only EVHRP SMALL 10-15)

| Item normally available from stock | |
|---|-----------|
| Model | Euro |
| Recessed formwork for EVHRP SMALL with lower air delivery and return connections UI VERSION | 887,63 ✓ |
| Recessed formwork for EVHRP SMALL with upper supply and return air connections US VERSION | 1005,48 ✓ |
| Kit for external air intakes | 402,19 ✓ |
| Cap for sleeve in packs of 5 pieces | 14,56 ✓ |

AESTHETIC COVER price list

| Model | Euro |
|---|----------|
| Composite panel in aluminum painted RAL9003 | 150,48 ✓ |