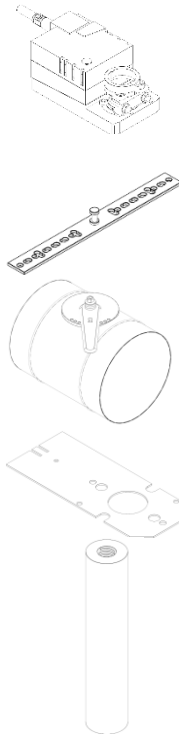


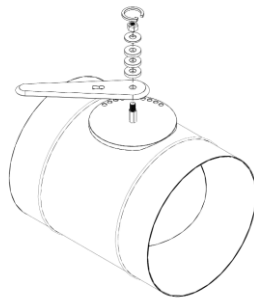
## INSTALLAZIONE SERVOMOTORE SU SERRANDA CIRCOLARE EDR

### 1) Componenti:

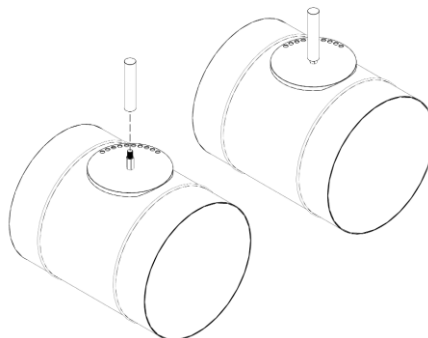
- Servomotore Belimo:  
N.B. In fase di ordine assicurarsi che il servomotore sia compatibile con il diametro specifico.
- Piastrina di fissaggio e viti (comprese nella confezione del servomotore);
- Serranda circolare EDR;
- Piastra per motorizzazione;
- Perno per motorizzazione;



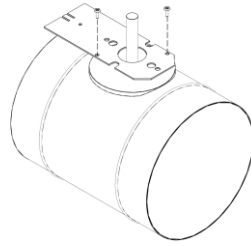
### 2) Svitare il dado e togliere la leva utilizzata per la chiusura manuale:



### 3) Va quindi installato il perno per motorizzazione:

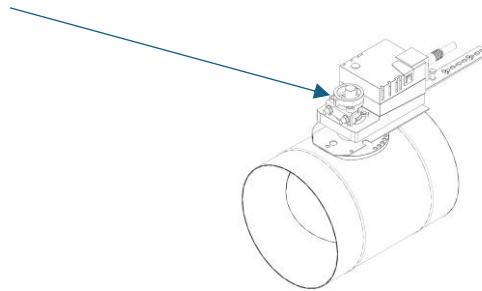


- 4) Installare la piastra per motorizzazione, viti di fissaggio non fornite a corredo:

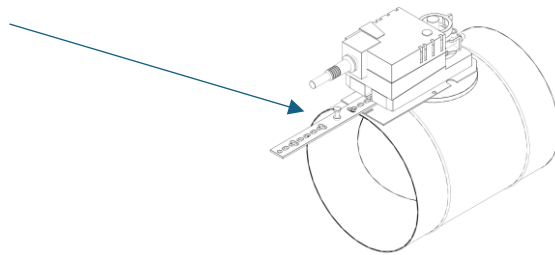


N.B. nel caso i fori non collimassero provvedere a riforare la piastra.

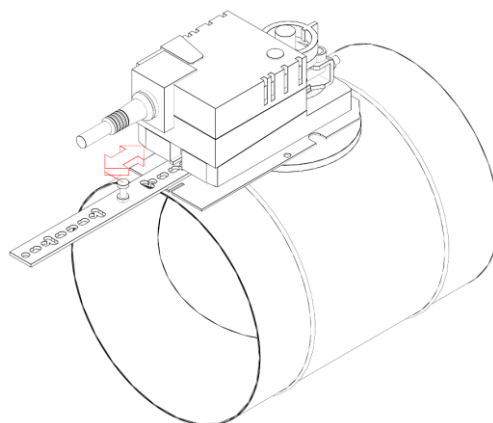
- 5) Va quindi installato il servomotore andando a inserire il perno della serranda nell'inserto dello stesso:



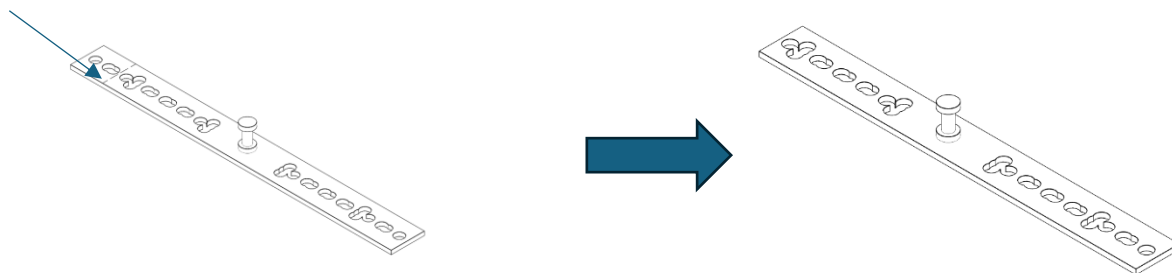
- 6) Essendo la base universale il perno di fermo della piastrina di fissaggio può sporgere di alcuni centimetri:



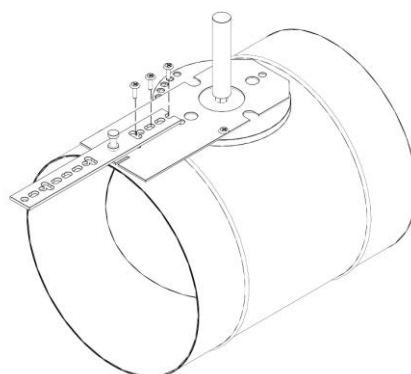
La piastrina di fissaggio va quindi tagliata di conseguenza, misurare la distanza segnata dalla freccia in rosso, tagliare quindi la base di fissaggio:



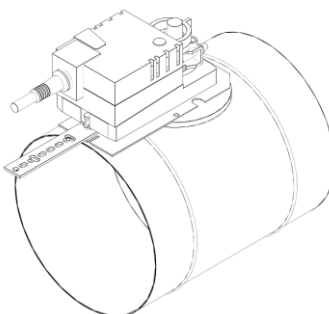
Riportare la quota misurata sulla piastra e tagliarla:



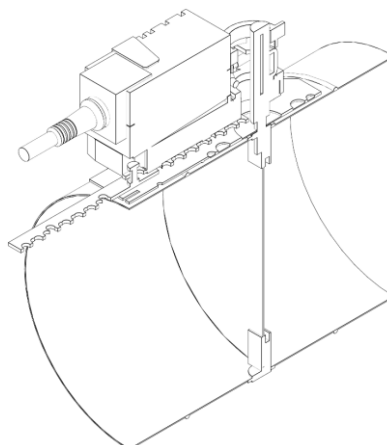
7) Installare la piastra sulla serranda e fissarla con le viti in dotazione:



8) Installare il servomotore e provvedere ai collegamenti elettrici:

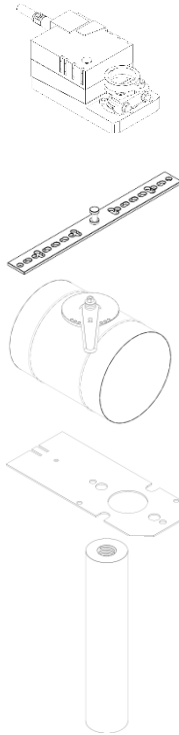


N.B. Verificare che quando il servomotore è in posizione di chiusura la pala della serranda sia come riportato nella sezione.

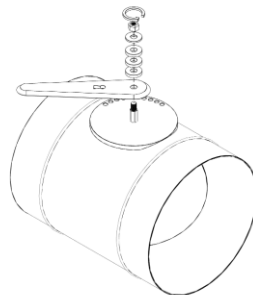


1) Components:

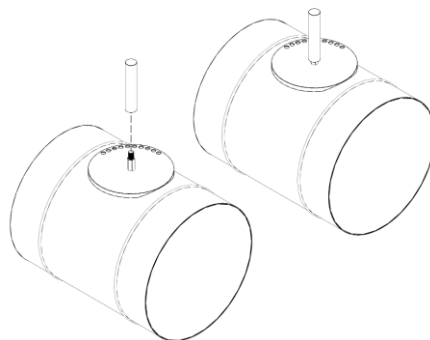
- Belimo actuator:  
N.B. When ordering, make sure that the actuatore is compatible with the specific diameter.
- Fixing plate and screws (included in the servo motor package);
- Circular damper EDR;
- Motorisation plate
- Motorisation pin



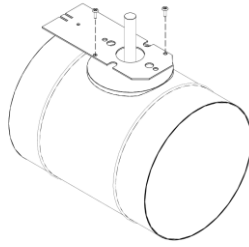
1) Unscrew the nut and remove the lever used for manual closing:



2) Install the motorisation pin:

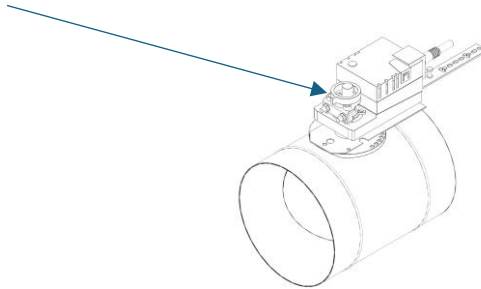


- 3) Install the plate for motorization, fixing screws not supplied:

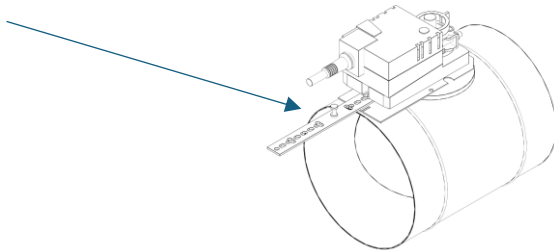


N.B. if the holes do not collide, re-drill the plate.

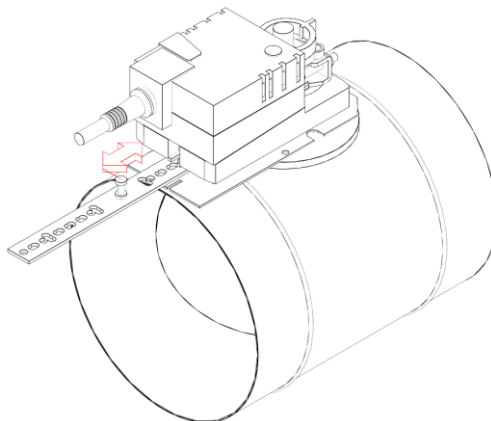
- 4) The actuator must then be installed by inserting the shutter pin into the shutter insert:



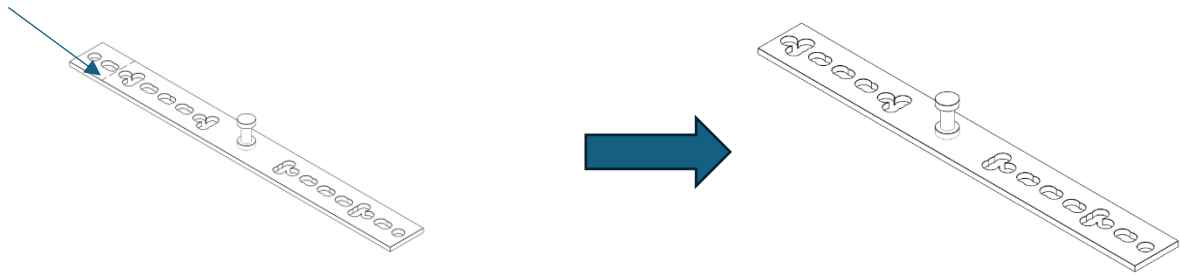
- 5) Since the base is universal, the retaining pin of the fixing plate can protrude a few centimetres:



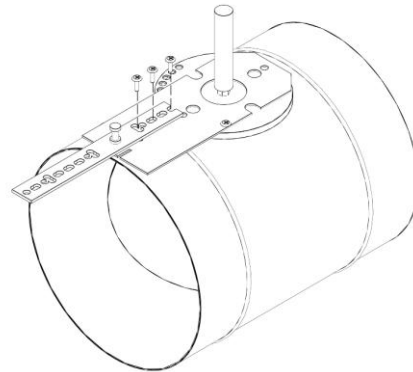
The fixing plate must then be cut accordingly, measure the distance marked by the red arrow then cut the fixing base:



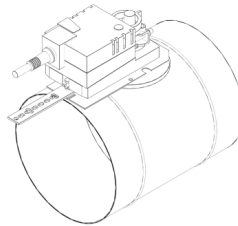
6) Write the measured dimension on the plate and cut it:



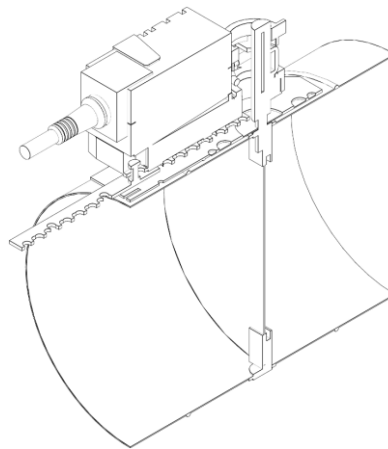
7) Install the fixing base with the supplied screws:



8) Install the servo motor and provide electrical connections:



N.B. Check that when the servo motor is in the closed position, the damper blade is as shown in the section.



REV.	DESCRIZIONE	REDATTO DA	DATA
00	PRIMA EMISSIONE	FRASSON M.	06/08/2025