



ERVR-N

Rectangular variable air flow regulator
with servomotor LMV-D3MP

Technical data sheet

Rev.03

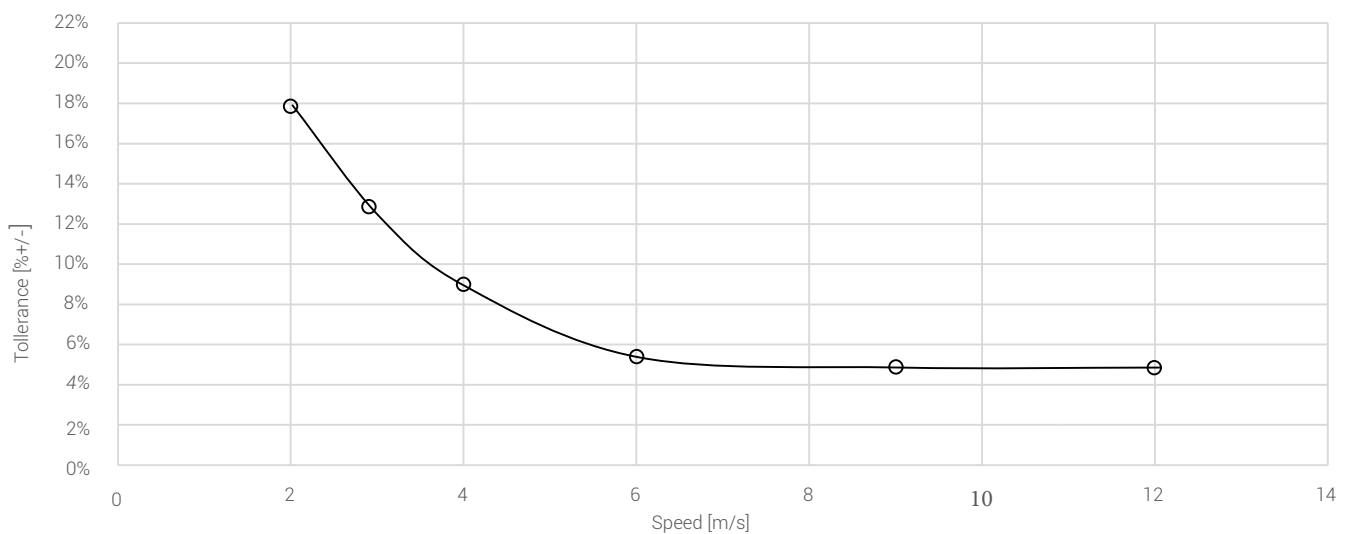
 **ecoclima**
AIR EVOLUTION

To prevent noise propagation that could reduce the comfort inside the building, it is recommend to consider maximum flow rate with a VAV internal air speed of 10 m/s. Pressure range from 20 to 1000 Pa.

Model		Minimum air flow (v=2 m/s)	Nominal air flow (v=10 m/s)	Maximum air flow(v=12 m/s)
B (mm)	H (mm)	m³/h	m³/h	mm
200	110	160	790	950
400	110	315	1580	1900
600	110	475	2375	2850
400	210	605	3040	3650
600	210	905	4540	5450
800	210	1210	6040	7250
600	310	1340	6710	8050
800	310	1785	8915	10700
1000	310	2230	11150	13400
600	410	1770	8875	10650
800	410	2360	11790	14150
1000	410	2950	14750	17700

When ordering, indicate the minimum ad maximum air flow rates to be programmed.

The uncertainty of the probe reading at various air flow rates is shown below. We recommend use in the range 6-8 m/s:



N.B. Please note that the values shown in the following table are indicative data obtain through mathematical extrapolation and not experimental values.



Model			Frequency(Hz)								Lw	Frequency (Hz)								Lw
Φ	Speed	Air flow	125	250	500	1000	2000	4000	8000	dB(A)	125	250	500	1000	2000	4000	8000	dB(A)		
mm	m/s	m³/h	NOISE GENERATED AT 200 Pa								NOISE GENERATED AT 500 Pa									
200x110	2	160	49	56	60	55	54	46	37	61	52	58	63	61	60	57	51	66		
	6	475	56	61	59	59	57	52	45	63	61	65	72	66	65	62	56	72		
	10	790	59	65	60	61	58	51	45	65	68	69	76	69	68	63	58	76		
	12	950	60	67	61	62	58	51	45	66	72	71	78	71	70	64	60	78		
mm	m/s	m³/h	NOISE RADIATED AT 200 Pa SINGLE CASE								NOISE RADIATED AT 500 Pa SINGLE CASE									
200x110	2	160	44	48	49	43	40	31	29	49	47	52	52	49	47	42	41	54		
	6	475	56	57	48	42	39	36	33	51	62	60	62	53	50	45	45	61		
	10	790	60	63	51	46	42	36	32	56	67	65	65	53	50	46	45	64		
	12	950	62	67	53	49	44	35	32	59	69	68	66	52	49	46	45	65		
mm	m/s	m³/h	NOISE RADIATED AT 200 Pa DOUBLE CASE								NOISE RADIATED AT 500 Pa DOUBLE CASE									
200x110	2	160	40	43	42	28	25	>20	>20	41	43	47	45	34	32	27	26	44		
	6	475	52	52	41	27	24	21	>20	45	58	55	55	38	35	30	30	54		
	10	790	56	58	44	31	27	21	>20	51	63	60	58	38	35	31	30	57		
	12	950	58	62	46	34	29	>20	>20	54	65	63	59	37	34	31	30	59		
mm	m/s	m³/h	NOISE GENERATED AT 200 Pa								NOISE GENERATED AT 500 Pa									
400x110	2	315	51	58	62	57	56	47	36	63	54	60	65	63	62	59	53	68		
	6	950	58	63	61	61	59	63	47	65	63	66	74	68	67	64	58	74		
	10	1580	61	67	62	63	60	63	46	67	70	71	78	71	70	65	60	78		
	12	1900	62	69	63	64	60	52	46	68	74	73	80	73	72	66	61	80		
mm	m/s	m³/h	NOISE RADIATED AT 200 Pa SINGLE CASE								NOISE RADIATED AT 500 Pa SINGLE CASE									
400x110	2	315	46	50	51	44	41	32	30	51	49	54	54	51	49	44	42	56		
	6	950	58	59	50	44	40	37	35	53	64	62	64	55	52	47	47	63		
	10	1580	62	65	53	48	44	37	33	58	69	67	67	55	51	47	47	66		
	12	1900	64	69	54	50	45	36	33	61	72	70	68	54	50	47	47	67		
mm	m/s	m³/h	NOISE RADIATED AT 200 Pa DOUBLE CASE								NOISE RADIATED AT 500 Pa DOUBLE CASE									
400x110	2	315	42	45	44	29	26	>20	>20	43	45	49	47	36	34	29	27	47		
	6	950	54	54	43	29	25	22	>20	47	60	57	57	40	37	32	32	56		
	10	1580	58	60	46	33	29	22	>20	53	65	62	60	40	36	32	32	59		
	12	1900	60	64	47	35	30	21	>20	56	68	65	61	39	32	32	32	61		

N.B. Please note that the values shown in the following table are indicative data obtain through mathematical extrapolation and not experimental values.



Model			Frequency(Hz)								Lw	Frequency (Hz)								Lw
Φ	Speed	Air flow	125	250	500	1000	2000	4000	8000	dB(A)	125	250	500	1000	2000	4000	8000	dB(A)		
mm	m/s	m³/h	NOISE GENERATED AT 200 Pa								NOISE GENERATED AT 500 Pa									
600x110	2	475	53	60	64	59	58	49	40	65	56	62	67	66	65	61	55	71		
	6	1426	60	66	63	63	61	55	48	68	65	69	76	70	69	66	60	77		
	10	2375	63	70	64	65	62	55	48	69	72	73	80	73	72	67	62	80		
	12	2850	65	72	65	66	63	54	48	70	75	75	82	75	74	68	63	82		
mm	m/s	m³/h	NOISE RADIATED AT 200 Pa SINGLE CASE								NOISE RADIATED AT 500 Pa SINGLE CASE									
600x110	2	475	48	53	54	47	44	34	32	53	51	56	56	53	51	46	44	59		
	6	1426	60	62	52	46	42	39	36	56	67	64	67	57	54	49	49	66		
	10	2375	64	68	55	50	45	38	35	61	72	70	70	57	53	49	49	68		
	12	2850	66	71	56	52	47	38	34	63	74	73	71	56	52	49	49	69		
mm	m/s	m³/h	NOISE RADIATED AT 200 Pa DOUBLE CASE								NOISE RADIATED AT 500 Pa DOUBLE CASE									
600x110	2	475	44	48	47	32	29	>20	>20	45	47	51	49	38	36	31	29	48		
	6	1426	56	57	45	31	27	24	21	49	63	59	60	42	39	34	34	58		
	10	2375	60	63	48	35	30	23	>20	55	68	65	63	42	38	34	34	61		
	12	2850	62	66	49	37	32	23	>20	58	70	68	64	41	37	34	34	64		
mm	m/s	m³/h	NOISE GENERATED AT 200 Pa								NOISE GENERATED AT 500 Pa									
400x210	2	605	50	54	55	55	55	51	43	60	56	61	62	62	64	62	56	69		
	6	1841	61	65	61	61	60	55	49	66	66	71	72	68	68	67	61	75		
	10	3040	63	68	65	64	63	58	52	69	69	74	75	71	71	67	63	77		
	12	3650	64	70	67	66	65	59	54	71	71	75	77	72	72	68	64	79		
mm	m/s	m³/h	NOISE RADIATED AT 200 Pa SINGLE CASE								NOISE RADIATED AT 500 Pa SINGLE CASE									
400x210	2	605	48	50	45	43	39	27	26	48	50	52	45	44	43	41	39	50		
	6	1841	59	58	44	42	37	32	30	52	65	65	54	50	46	43	40	59		
	10	3040	65	64	48	45	41	35	32	57	73	72	58	53	48	45	45	65		
	12	3650	68	67	50	47	42	36	33	60	77	75	60	54	49	46	42	68		
mm	m/s	m³/h	NOISE RADIATED AT 200 Pa DOUBLE CASE								NOISE RADIATED AT 500 Pa DOUBLE CASE									
400x210	2	605	44	45	38	28	24	>20	>20	39	46	47	38	29	28	26	24	41		
	6	1841	55	53	37	27	22	>20	>20	46	61	60	47	35	31	28	25	53		
	10	3040	61	59	41	30	26	>20	>20	52	69	67	51	38	33	30	27	60		
	12	3650	64	62	43	32	27	21	>20	54	73	70	53	39	34	31	27	63		

N.B. Please note that the values shown in the following table are indicative data obtain through mathematical extrapolation and not experimental values.



Model			Frequency(Hz)								Lw	Frequency (Hz)								Lw
Φ	Speed	Air flow	125	250	500	1000	2000	4000	8000	dB(A)	125	250	500	1000	2000	4000	8000	dB(A)		
mm	m/s	m³/h	NOISE GENERATED AT 200 Pa								NOISE GENERATED AT 500 Pa									
600x210	2	905	52	56	57	58	57	53	43	63	58	53	64	64	66	64	58	71		
	6	2722	63	68	63	63	62	57	51	68	68	73	75	71	70	69	63	77		
	10	4540	65	71	67	67	65	60	54	72	72	76	78	73	73	70	65	80		
	12	5450	66	72	69	68	67	61	56	73	73	78	79	74	75	70	66	81		
mm	m/s	m³/h	NOISE RADIATED AT 200 Pa SINGLE CASE								NOISE RADIATED AT 500 Pa SINGLE CASE									
600x210	2	905	50	52	48	45	41	29	27	50	53	55	47	46	46	43	41	53		
	6	2722	62	61	46	44	36	33	31	54	68	67	56	52	48	45	42	61		
	10	4540	67	66	50	47	42	36	33	59	75	74	60	54	50	47	43	67		
	12	5450	66	72	69	68	67	61	56	73	73	78	79	74	75	70	66	81		
mm	m/s	m³/h	NOISE RADIATED AT 200 Pa DOUBLE CASE								NOISE RADIATED AT 500 Pa DOUBLE CASE									
600x210	2	905	46	47	41	30	26	>20	>20	42	49	50	40	31	31	28	26	44		
	6	2722	58	56	39	29	24	>20	>20	49	64	62	49	37	33	30	27	55		
	10	4540	63	61	43	32	27	21	>20	54	71	69	53	39	35	32	28	61		
	12	5450	66	64	45	34	29	23	>20	56	75	72	55	40	35	32	26	65		
mm	m/s	m³/h	NOISE GENERATED AT 200 Pa								NOISE GENERATED AT 500 Pa									
800x210	2	1210	53	57	58	59	58	53	46	64	58	63	64	64	66	64	58	71		
	6	3629	64	68	64	64	63	58	52	69	59	64	65	65	67	65	59	72		
	10	6040	66	72	68	68	66	60	55	73	72	77	78	74	74	70	66	81		
	12	7250	67	73	70	70	68	62	57	74	74	48	80	75	75	71	67	82		
mm	m/s	m³/h	NOISE RADIATED AT 200 Pa SINGLE CASE								NOISE RADIATED AT 500 Pa SINGLE CASE									
800x210	2	1210	51	53	49	46	41	29	28	51	54	55	48	47	46	44	41	54		
	6	3629	63	62	46	44	40	33	31	55	68	68	57	53	49	46	43	62		
	10	6040	68	67	50	48	43	37	34	60	76	75	61	55	50	47	44	68		
	12	7250	71	73	52	50	44	38	35	63	80	78	53	56	51	48	44	71		
mm	m/s	m³/h	NOISE RADIATED AT 200 Pa DOUBLE CASE								NOISE RADIATED AT 500 Pa DOUBLE CASE									
800x210	2	1210	47	48	42	31	26	>20	>20	43	50	50	41	32	31	29	26	44		
	6	3629	59	57	39	29	25	>20	>20	50	64	63	50	38	34	31	28	56		
	10	6040	64	62	43	33	28	22	>20	55	72	70	54	40	35	32	29	63		
	12	7250	67	65	45	35	29	23	>20	57	76	73	56	41	36	33	29	66		

N.B. Please note that the values shown in the following table are indicative data obtain through mathematical extrapolation and not experimental values.



Model			Frequency(Hz)								Lw	Frequency (Hz)								Lw
Φ	Speed	Air flow	125	250	500	1000	2000	4000	8000	dB(A)	125	250	500	1000	2000	4000	8000	dB(A)		
mm	m/s	m³/h	NOISE GENERATED AT 200 Pa								NOISE GENERATED AT 500 Pa									
600x310	2	1340	53	55	57	61	59	58	47	65	57	60	63	64	64	66	64	71		
	6	4018	64	62	61	62	61	57	51	67	71	68	73	70	68	68	63	76		
	10	6710	68	69	64	66	64	59	53	70	78	7	76	73	71	70	65	79		
	12	8050	70	73	66	68	65	59	54	72	81	77	78	74	73	70	66	80		
mm	m/s	m³/h	NOISE RADIATED AT 200 Pa SINGLE CASE								NOISE RADIATED AT 500 Pa SINGLE CASE									
600x310	2	1340	50	53	55	53	49	42	33	57	53	58	59	62	62	54	45	67		
	6	4018	62	59	47	47	49	45	34	56	69	66	60	57	651	57	47	66		
	10	6710	69	67	52	51	50	45	34	61	75	72	60	58	62	58	49	69		
	12	8050	73	71	55	53	51	45	34	64	78	75	60	59	62	59	49	70		
mm	m/s	m³/h	NOISE RADIATED AT 200 Pa DOUBLE CASE								NOISE RADIATED AT 500 Pa DOUBLE CASE									
600x310	2	1340	46	48	48	38	34	27	>20	47	49	53	52	47	47	39	30	54		
	6	4018	58	54	40	32	34	30	>20	48	65	61	53	42	46	42	32	56		
	10	6710	65	62	45	36	35	30	>20	55	71	67	53	43	47	43	34	61		
	12	8050	69	66	48	38	36	30	>20	59	74	70	53	44	47	44	34	64		
mm	m/s	m³/h	NOISE GENERATED AT 200 Pa								NOISE GENERATED AT 500 Pa									
800x310	2	1785	54	55	57	62	59	59	48	66	54	58	60	53	65	66	64	72		
	6	5357	65	63	62	63	62	58	51	68	72	69	74	71	69	69	63	77		
	10	8915	69	70	65	67	65	59	63	71	79	75	77	74	72	70	66	81		
	12	10700	71	74	66	69	66	60	54	73	82	78	79	75	74	71	67	81		
mm	m/s	m³/h	NOISE RADIATED AT 200 Pa SINGLE CASE								NOISE RADIATED AT 500 Pa SINGLE CASE									
800x310	2	1785	51	54	56	54	50	43	34	58	54	58	60	63	63	55	46	68		
	6	5357	63	60	48	47	50	45	34	57	71	68	61	58	62	58	48	67		
	10	8915	71	68	53	52	51	45	35	62	76	73	61	59	63	59	49	70		
	12	10700	74	72	55	53	51	45	35	65	79	76	61	59	63	59	50	71		
mm	m/s	m³/h	NOISE RADIATED AT 200 Pa DOUBLE CASE								NOISE RADIATED AT 500 Pa DOUBLE CASE									
800x310	2	1785	47	49	49	39	35	28	>20	48	50	53	53	48	48	40	31	55		
	6	5357	59	55	41	32	35	30	>20	49	67	63	54	43	47	43	33	58		
	10	8915	67	63	46	37	36	30	>20	56	72	68	54	44	48	44	34	62		
	12	10700	70	67	48	38	36	30	>20	60	75	71	54	44	48	44	35	64		

N.B. Please note that the values shown in the following table are indicative data obtain through mathematical extrapolation and not experimental values.



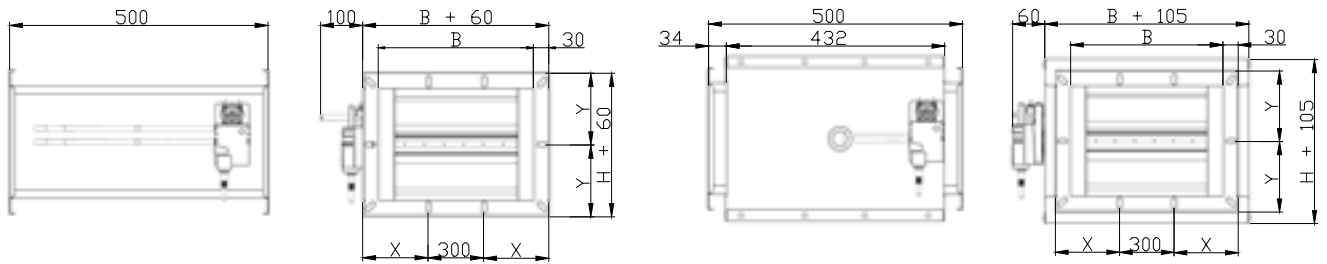
Model			Frequency(Hz)								Lw	Frequency (Hz)								Lw
Φ	Speed	Air flow	125	250	500	1000	2000	4000	8000	dB(A)	125	250	500	1000	2000	4000	8000	dB(A)		
mm	m/s	m³/h	NOISE GENERATED AT 200 Pa								NOISE GENERATED AT 500 Pa									
1000x310	2	2230	55	56	58	63	60	60	49	67	59	61	64	66	66	67	65	73		
	6	6696	66	64	63	64	63	59	52	69	73	70	75	72	70	70	64	78		
	10	11150	70	71	66	68	66	60	54	72	80	76	78	75	73	71	67	81		
	12	13400	72	75	68	70	67	61	55	74	83	79	80	76	75	72	68	82		
mm	m/s	m³/h	NOISE RADIATED AT 200 Pa SINGLE CASE								NOISE RADIATED AT 500 Pa SINGLE CASE									
1000x310	2	2230	52	55	57	55	51	44	34	59	55	59	61	64	64	59	46	69		
	6	6696	64	61	49	48	51	46	35	58	72	69	62	59	63	59	49	68		
	10	11150	72	69	54	52	52	46	35	63	78	74	62	60	64	60	50	71		
	12	13400	75	73	56	54	52	46	38	66	80	77	62	60	63	60	50	72		
mm	m/s	m³/h	NOISE RADIATED AT 200 Pa DOUBLE CASE								NOISE RADIATED AT 500 Pa DOUBLE CASE									
1000x310	2	2230	48	50	50	40	36	29	>20	49	51	54	54	49	49	41	31	56		
	6	6696	60	56	42	33	36	31	>20	50	68	64	55	44	48	44	34	59		
	10	11150	68	64	47	37	37	31	>20	57	74	69	55	45	49	45	35	63		
	12	13400	71	68	49	39	37	31	>20	61	76	72	55	45	48	45	35	65		
mm	m/s	m³/h	NOISE GENERATED AT 200 Pa								NOISE GENERATED AT 500 Pa									
600x410	2	1770	57	57	56	57	59	53	44	63	65	71	69	68	68	67	63	75		
	6	5314	67	65	64	66	65	55	52	70	73	71	74	71	70	68	64	77		
	10	8875	69	71	65	68	66	60	54	72	78	77	78	75	74	71	66	81		
	12	10650	70	74	66	68	66	61	54	73	81	80	80	77	76	72	67	82		
mm	m/s	m³/h	NOISE RADIATED AT 200 Pa SINGLE CASE								NOISE RADIATED AT 500 Pa SINGLE CASE									
600x410	2	1770	53	56	55	53	42	34	33	56	57	56	48	48	48	45	42	55		
	6	5314	65	62	47	46	42	36	34	56	71	69	56	53	50	43	44	53		
	10	8875	72	69	54	51	45	39	35	63	76	74	59	55	50	45	40	67		
	12	10650	75	73	57	53	47	41	35	66	79	76	61	56	50	46	38	69		
mm	m/s	m³/h	NOISE RADIATED AT 200 Pa DOUBLE CASE								NOISE RADIATED AT 500 Pa DOUBLE CASE									
600x410	2	1770	49	51	48	38	27	>20	>20	47	53	51	41	33	33	20	27	45		
	6	5314	61	57	40	31	27	21	>20	50	76	70	72	71	69	69	66	57		
	10	8875	68	64	47	36	30	24	>20	57	72	69	52	40	35	30	25	62		
	12	10650	71	68	50	38	32	26	>20	61	75	71	54	41	35	31	23	64		

N.B. Please note that the values shown in the following table are indicative data obtain through mathematical extrapolation and not experimental values.



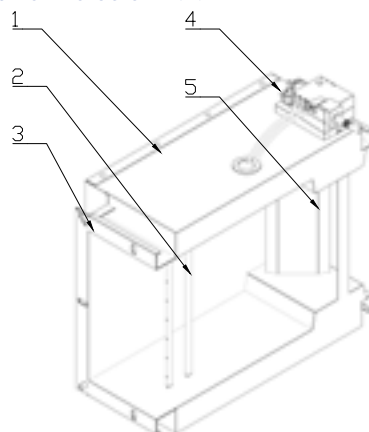
Model			Frequency(Hz)								Lw	Frequency (Hz)								Lw
Φ	Speed	Air flow	125	250	500	1000	2000	4000	8000	dB(A)	125	250	500	1000	2000	4000	8000	dB(A)		
mm	m/s	m³/h	NOISE GENERATED AT 200 Pa								NOISE GENERATED AT 500 Pa									
800x410	2	2360	58	58	57	58	60	54	45	64	66	72	70	69	69	68	64	76		
	6	7085	68	65	65	67	65	60	53	71	74	72	75	72	71	69	65	78		
	10	11790	70	72	66	69	67	61	55	73	79	77	78	76	75	71	67	82		
	12	14150	71	75	67	70	67	62	55	74	81	80	81	78	77	72	67	83		
mm	m/s	m³/h	NOISE RADIATED AT 200 Pa SINGLE CASE								NOISE RADIATED AT 500 Pa SINGLE CASE									
800x410	2	2360	54	57	56	53	43	34	34	57	58	57	49	49	49	46	43	56		
	6	7085	66	63	48	47	43	37	34	57	72	70	56	53	50	43	44	64		
	10	11790	73	70	54	51	46	40	35	64	77	75	60	55	50	45	41	68		
	12	14150	76	74	58	54	47	41	36	67	80	77	62	56	50	46	39	70		
mm	m/s	m³/h	NOISE RADIATED AT 200 Pa DOUBLE CASE								NOISE RADIATED AT 500 Pa DOUBLE CASE									
800x410	2	2360	50	52	49	38	28	>20	>20	48	54	52	42	34	34	31	28	46		
	6	7085	62	58	41	32	28	22	>20	51	68	65	49	38	35	28	29	58		
	10	11790	69	65	47	36	31	25	>20	58	73	70	53	40	35	30	26	63		
	12	14150	73	69	51	39	32	26	21	62	76	72	55	41	35	31	24	65		
mm	m/s	m³/h	NOISE GENERATED AT 200 Pa								NOISE GENERATED AT 500 Pa									
1000x410	2	2950	59	59	58	59	61	55	46	65	67	73	71	70	70	69	65	77		
	6	8856	69	66	66	68	66	61	54	72	75	73	76	73	72	70	66	79		
	10	14750	71	73	67	70	68	62	55	74	80	78	80	77	76	72	68	83		
	12	17700	72	76	68	71	68	63	56	75	82	81	82	79	78	73	68	84		
mm	m/s	m³/h	NOISE RADIATED AT 200 Pa SINGLE CASE								NOISE RADIATED AT 500 Pa SINGLE CASE									
1000x410	2	2950	55	58	57	54	44	35	34	58	59	58	50	50	50	47	44	57		
	6	8856	67	64	48	48	44	37	35	58	73	71	57	54	51	44	45	65		
	10	14750	74	71	55	52	46	40	36	65	78	76	61	56	51	46	41	69		
	12	17700	77	75	59	54	48	42	36	68	81	78	62	57	51	47	39	71		
mm	m/s	m³/h	NOISE RADIATED AT 200 Pa DOUBLE CASE								NOISE RADIATED AT 500 Pa DOUBLE CASE									
1000x410	2	2950	51	53	50	39	29	>20	>20	49	55	53	43	53	53	52	29	47		
	6	8856	63	59	41	33	29	22	>20	53	69	66	50	39	36	29	30	59		
	10	14750	70	66	48	37	31	25	21	59	74	71	54	41	36	31	26	64		
	12	17700	73	70	52	39	33	27	21	63	77	73	55	42	36	32	24	66		

DIMENSIONS



Model		Base holes		Height holes	
B	H	N° buttonholes	X	N° buttonholes	X
mm	mm		mm		mm
200	110	1	116,1	0	0
400	110	1	216,1	0	0
600	110	1	316,1	0	0
400	210	1	216,1	1	116,6
600	210	1	316,1	1	116,6
800	210	2	266,1	1	116,6
600	310	1	316,1	1	166,6
800	310	2	266,1	1	166,6
1000	310	3	216,1	1	166,6
600	410	1	316,1	1	216,6
800	410	2	266,1	1	216,6
1000	410	3	216,1	1	216,6

N.B. In the corner are always drill 4 buttonholes at 45°.

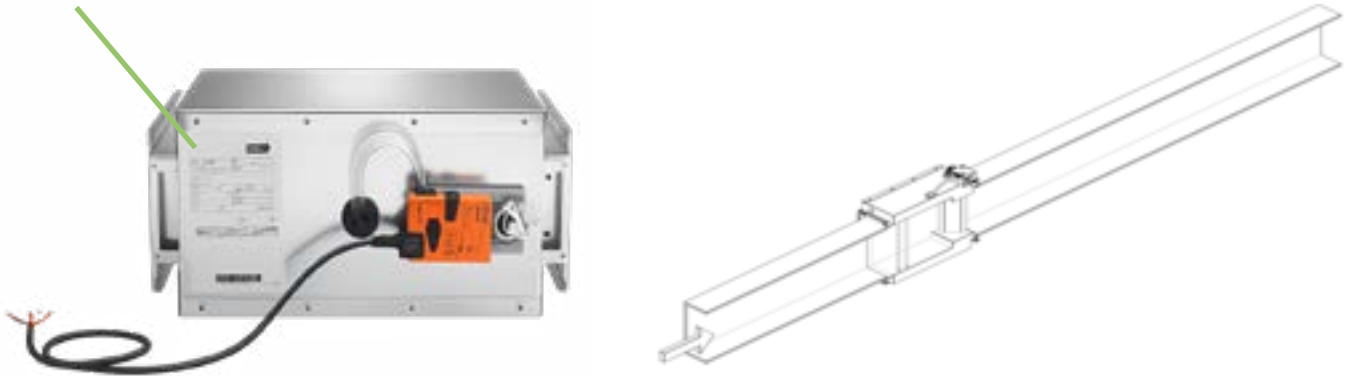


- 1- Galvanized steel case Z200 thickness 1mm, double case version with rockwool with density 50 kg/m³ and Bs2 fire reaction class according to regulation UNI EN 13510-1;
- 2- Dynamic dp probe with nylon pressure taps;
- 3- Connection flange with 9x22 buttonholes;
- 4- Servomotor with cable configurabel via NFC and Assistant App2 application;
- 5- Regulation damper with contrast blades 100 mm pitch made in aluminium with silicone gasket;

INSTALLATION

ERVR-N regulators can be installed in either a vertical or horizontal position without affecting the regulation; ensure that the air flow follows the specifications indicated on the label affixed to the regulator itself.

The flow must pass first through the measuring orifice and then through the damper; this is to prevent turbulence at the measuring element, which could affect the regulation.



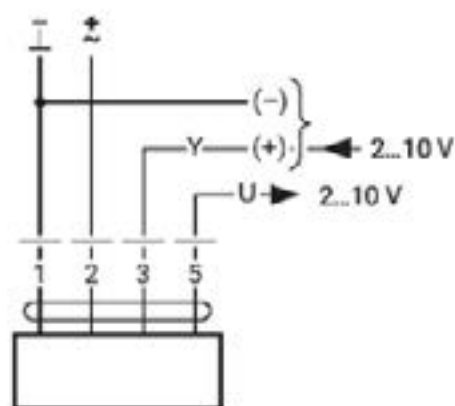
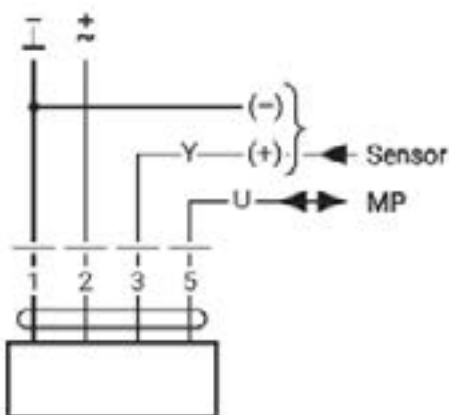
Particular attention must be paid to any constrictions, bends or deviations upstream of the ERVC-N controller, ensuring that the straight section, both upstream and downstream, is at least 2–3 times the diameter of the controller.

Air velocity also affects the quality of control; excessively low velocities result in greater uncertainty in the sensor's readings. It is therefore recommended that the VAV be sized to achieve a flow velocity of between 6 and 8 m/s.

The power supply is 24 V AC/DC via a safety transformer; the electrical connections required for correct installation are listed below:

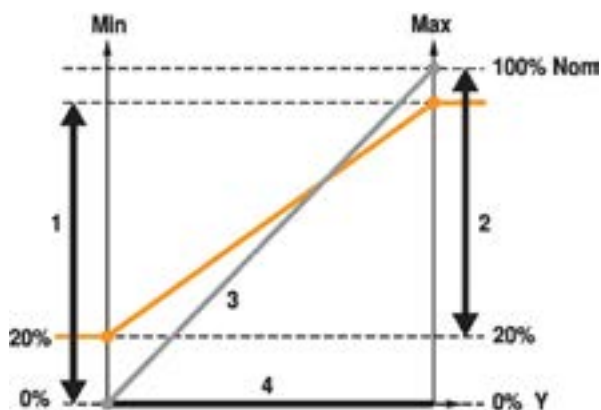
MP-Bus

AC/DC 24V



- 1- Black;
- 2- Red;
- 3- White;
- 5- Orange;

Below are the regulation graphs for the 0...10 V version and for the 2...10 V version:



- 1- Regolazione range Min;
- 2- Regolazione range Max
- 3- Feedback U 0...100% Nom;
- 5- Controllo Y Min...Max;

ACCESSORIES

The following accessories can be purchased for the managing of the controller:

- Display ZTH EU;
- Connection cable ZKI-GEN;

The display ZTH EU display is an assistance tool for parametrization and control of the regulator, allowing realtime check of air flow rate, damper opening percentage, and control ramp adjustment by varying the minimum and maximum flow rate parameter and the required set point:



The electrical connection is made using the ZKI-GEN accessory, which is equipped with RJ11 and LINK 1.0 connectors at both ends to enable the servomotor and display to be connected correctly.

The controllers are supplied as standard with MP-Bus communication. To enable the use of other communication protocols, it is necessary to purchase native servomotors with BACnet, Modbus RTU or KNX connections.

CODE

How to order

ERVR-N	I	0	125
	↓	↓	↓
Rectangular regulator ERVR-N	[] Single case I Double case	0 Segnale 0...10 V 2 Segnale 2...10V	Diametro



Head quarter

ECOCLIMA SRL
Via Caduti di Russia, 19
35010 Curtarolo - PADOVA - ITALY
P. +39 049 9620344
info@ecoclima.com

Sales office Italy
info@ecoclima.com

Sales office international
francesca@ecoclima.com

ecoclima.com    



CERTIFIED SYSTEM
ISO 9001
ISO 50001
ISO 45001
ISO 14001
Certified Management System